

Farming and Rural Development in the Cotswolds after Brexit





Cotswolds – a farmed landscape



- Agricultural land – 87% of AONB of which 49% arable and 43% grass
- Woodland 12%
- Farm type – livestock 45%, cereals 20%, general cropping 14%, mixed 10%, dairy 4%
- Main crops – winter wheat, spring barley and oil seed rape



The CAP cornerstone

Set up in 1957 to:

- Increase agricultural productivity
- Ensure fair standard of living for farmers
- Stabilise markets
- Ensure availability of supplies
- Ensure reasonable process for consumers

38% of EU budget (€58bn)



CAP in the UK

- Pillar 1 – direct payments
- Single Payment Scheme (£2.4bn) annually
- Pillar 2 Agri-environment and rural development – (£4bn 2014 - 2020)

- Equals 55% of total UK farm income

CAP in the Cotswolds



- BPS – approx. £38m
- Agri-environment – Approx £9.1m
- Farm gate income £110m





Value of farming

Farming supports:

- Farm gate income £110m (approx. £800m total value)
- Rural business - £337m GVA dependent on AONB
- Jobs inc 9,720 critically dependent on landscape quality
- Tourism – 23 million days visits, worth £1bn
- Public water supply – est. 500m litres a day for Thames water alone.
- Biodiversity – e.g. grassland, farmland birds
- Historic environment – 400+ SAMs and >17,500 ‘local sites’

CAP



Leaving EU = leaving the CAP

- Supports farming – BPS
- Supports landscape – Agri-environment (1994)
- Supports rural business – LEADER

- It is common – one size to fit all!

- Leaving = challenges & opportunities

Agri-environment under CAP



- Silo based
 - Prescriptive
 - Risk adverse
 - Income forgone
 - Poorly monitored
 - Diminished advice
- And confusing



<p>EUROPEAN REGIONAL DEVELOPMENT FUND (ERDF)</p>  <p>ERDF PRIORITY IS TO COMPLEMENT AND ENHANCE GROWTH THROUGH INNOVATION</p> <p>PROJECT CALLS FOR ERDF FUNDS ARE OPEN AT DIFFERING TIMES FOR DIFFERENT AMOUNTS. FOR FULL DETAILS CLICK ON FURTHER INFORMATION</p>	<p>EUROPEAN SOCIAL FUND (ESF)</p>  <p>HELP NEETs RETRAIN OLDER WORKERS TO TACKLE SKILLS GAPS</p> <p>PATHWAYS FOR LONG TERM UNEMPLOYED</p> <p>€9.3M AVAILABLE</p>	<p>EUROPEAN AGRICULTURAL FUND FOR RURAL DEVELOPMENT (EAFRD)</p>  <p>€3.4M OF FUNDS FOR:</p> <p>€1.7M FOR RURAL BROADBAND</p> <p>€0.9M FOR RURAL TOURISM</p>	<p>LEADER</p>  <p>FUNDING COVERS CHILTERNs</p> <p>OXFORDSHIRE NORTH WESSEX DOWNS</p> <p>COTSWOLDS AND WEST OXFORDSHIRE</p>	<p>HORIZON 2020 (H2020)</p>  <p>H2020 COVERS ALL SMEs WHO WANT TO SCALE UP GOOD IDEAS</p> <p>STAGE 1 CONCEPT</p> <p>£50K</p> <p>REWARDING INNOVATION</p>	<p>COUNTRYSIDE PRODUCTIVITY</p>  <p>COUNTRYSIDE PRODUCTIVITY FUNDING INCLUDES THE EUROPEAN INNOVATION PARTNERSHIP WHICH SUPPORTS INNOVATION IN LINKING RESEARCH WITH FARMING AND FORESTRY PRACTICES</p>
--	---	--	---	---	---

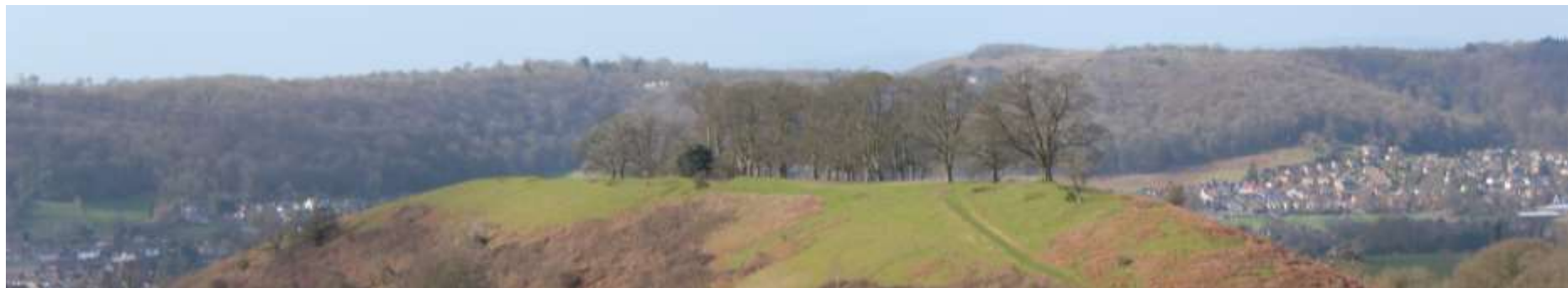
FUNDING STREAMS

<p>€10M IN THE POT</p> <p>€3.7M TO FOSTER INNOVATION</p> <p>€3.9M TO HELP SME's BE MORE COMPETITIVE</p> <p>€2.4M FOR LOW CARBON</p> <p>PLEASE SIGN UP TO THE OXLEP NEWSLETTER AT: http://www.oxfordshirelep.com/content/</p> <p>FOR FURTHER INFORMATION</p>  <p>CLICK HERE</p>	<p>€3.1M FOR LABOUR MARKET MOBILITY</p> <p>€1.8M FOR SOCIAL INCLUSION</p> <p>€1.5M FOR APPRENTICESHIPS</p> <p>PROJECT CALLS FOR ESF FUNDS ARE OPEN AT DIFFERING TIMES FOR DIFFERENT AMOUNTS.</p> <p>PLEASE SIGN UP TO THE OXLEP NEWSLETTER AT: http://www.oxfordshirelep.com/content/</p> <p>FOR FURTHER INFORMATION</p>  <p>CLICK HERE</p>	<p>€0.9M FOR SMALL SCALE RENEWABLE ENERGY SCHEMES</p> <p>EAFRD GRANTS ARE FROM BETWEEN £35K AND £120K</p> <p>PROJECT CALLS FOR EAFRD FUNDS ARE OPEN AT DIFFERING TIMES FOR DIFFERENT AMOUNTS</p> <p>GRANTS ARE ADMINISTERED BY THE RURAL PAYMENTS AGENCY</p> <p>FOR FURTHER INFORMATION</p>  <p>CLICK HERE</p>	<p>GRANTS ARE DEPENDENT ON LOCATION AND RANGE BETWEEN £10 - 35K</p> <p>AWARDING GRANTS TO LOCAL PROJECTS FOR:</p> <p>FARMING TOURISM FORESTRY</p> <p>SMALL/MICRO BUSINESSES AND COMMUNITIES</p> <p>APPLICATIONS TO BE MADE TO THE AREA LOCAL ACTION GROUP</p> <p>FOR FURTHER INFORMATION</p>  <p>CLICK HERE</p>	<p>STAGE 2 PROTOTYPE DEVELOPMENT UP TO £5m</p> <p>APPLY TO THE EUROPEAN COMMISSION IN 5 STEPS:</p> <ol style="list-style-type: none"> 1. FIND A CALL 2. FIND PARTNERS 3. CREATE ACCOUNT 4. REGISTER ORGANISATION 5. SUBMIT PROPOSAL <p>STAGE 3 MARKETING SUPPORT</p> <p>FOR FURTHER INFORMATION</p>  <p>CLICK HERE</p>	<p>THE AMOUNT OF GRANT DEPENDS ON SIZE AND SECTOR OF BUSINESS</p> <p>WHO CAN APPLY FOR GRANTS?</p> <p>WOODLAND OWNERS FORESTRY CONTRACTORS FARMERS</p> <p>ADMINISTERED BY RURAL PAYMENTS AGENCY</p> <p>FOR FURTHER INFORMATION</p>  <p>CLICK HERE</p>
--	--	--	--	--	--



The offer

- A single menu of agri-environment and rural development
- Informed by local evidence
- Delivered locally
- Invests in the special qualities of the Cotswolds





A Future scheme

- Support for Cotswolds Agri-environment
- Delivered locally
- Supported by advisers
- Delivering outcomes on the ground
- An enabler, not an enforcer
- Supports landscape etc and food production
- Local people need to understand and support

A future scheme

Tailor made scheme

- Based on special qualities
- Reflect challenges of farming
- Benefits wider society





Locally tailored

- Cotswolds AONB Management Plan
- Landscape Character Assessment
- Landscape Strategy and Guidelines
- Local payment rates
- Guides and influences land management
- Outcome based
- Payment by results

To tackle Cotswold Issues



- Landscape – conserve and enhance
- Degraded soils
- Biodiversity
- Resilience to flood and drought
- Marginal returns
- Areas of natural constraint e.g. scarp
- Disconnect between town and country/people and nature

2 linked components

Cotswolds FARM



Farming and Rural Management

Basic level of environmental management

Obligations based on landscape

Cross compliance

Farm business advice

Cotswolds FARMRD



Enhanced environmental management and rural development to:

- Deliver public goods – landscape, biodiversity, water, woodland etc
- Deliver rural business growth and development



FARM & FARMRD



- Local needs
- Collaboration
- Outcome focused – payment by results
- Capital and revenue
- Private sector payments
- Develops connections
- Add value to farm and woodland produce
- Greater ownership and understood by residents and visitors



Process to date

- Cotswolds Farming Forum – April 2017
- National Parks proposal
- Focus group 1
- Outline FARM and FARMRD developed
- Exec and C&M
- Cotswolds FARM & FARMRD proposal sent to Lord Gardiner



Next steps

- Focus group – 2nd November
- Lord Gardiner visit

Develop our thinking further

- Targeting statement
- Cotswold specific options

