



Department
for Environment
Food & Rural Affairs

Farming in Protected Landscapes

Presented by:
Scott Brown
Heidi Gibbs
Caroline Regan

CNL Board
21 Feb 2023



Welcome



Scott Brown

Farming Engagement Lead



Heidi Gibbs

Farming Engagement Officer



Caroline Regan

Programme Administrator

Today we'll be talking about:

- Aims and objectives of FiPL
- How we're managing the programme
- The impact it's having
- Progress and next steps

June 2022

"At the beginning of this year, I had something that was really encouraging, and that is a farmer who said to me that he'd been involved with the Farming in Protected Landscapes scheme.

And he and a number of others since have said it is the best scheme that Defra have ever run."

Excerpt from transcript of speech delivered by George Eustice at Groundswell 2022.



January 2023

"In recognition of the positive feedback and outcomes delivered by FIPL, we will be extending the programme with £10m additional funding each year until March 2025. This will enable us to continue to support the important role that protected landscapes play in delivering our commitments.

We will continue to learn from FiPL and work to ensure the best concepts of FiPL are integrated within future environmental land management schemes within Protected Landscapes."

Excerpt from the [Environmental Improvement Plan 2023](#), page 254.



HM Government

Environmental Improvement Plan 2023

First revision of the 25 Year Environment Plan



What is FiPL?

- Part of Agricultural Transition Plan
- Grants for farmers and land managers in English NPs and AONBs
- Runs July 21 – March 25
- Developed by Defra with PL staff
- Locally administered
- Over £2m for Cotswolds + uplift from extension (TBC)

"We want: To support farmers and other land managers in Protected Landscapes, to help them diversify their income streams and lay the groundwork for our Environmental Land Management offer." ATP

Environmental land management schemes

	2021	2022	2023	2024	2025-2028
Tests and Trials	Started 2018				Ongoing
Sustainable Farming Incentive	Pilot applications open/piloting				Ongoing
		Early rollout of scheme begins		Learning from rollout & implementation	
Local Nature Recovery		Piloting			
		Phased rollout			
Landscape Recovery		Piloting			Ongoing
		Phased rollout			
Farming in Protected Landscapes	Starts			Ends	
England Woodland Creation Offer	Open (started June 2021)			Leads into future environmental schemes	
Tree Health Pilot	Pilot applications open		Pilot ends		Leads into future environmental schemes
	Existing Countryside Stewardship Woodland Tree Health grants ongoing				
Countryside Stewardship agreements, Wildlife Offers and Capital Grants	Applications open annually until 2023 for 2024		CS will close for new applications in 2023 and lead into future environmental schemes		
Animal Health & Welfare Pathway		Applications open			
Slurry Investment Scheme		Applications open			

New prosperity and productivity funding

	2021	2022	2023	2024	2025-2028
Future Farming Resilience Fund		Applications open		Ends	
Farming Investment Fund	Applications open			Ends	
Innovation R & D Scheme		Applications open			Ongoing
New Entrant Support Scheme		Applications open			

Direct payments, lump sums and delinking

	2021	2022	2023	2024	2025-2028
Phase-out of Direct Payments	Reductions start			Phase-out complete 2027	
Lump sum exit scheme	Consultation	Applications			
Delinked payments	Consultation			Delinking	Ends 2027


Department
for Environment
Food & Rural Affairs

Farming is changing



Farmers and land managers will be rewarded for doing even more to improve the environment whilst producing high quality food and other products.

Find out more about the changes and how you can get involved by visiting defra.farming.blog.gov.uk



What's it for?

- One-off projects, proposed by farmer and land managers
- Outcomes for climate, nature, people and/or place
- Delivery of CNL management plan
- Helping farm businesses adapt
- Capital and revenue - up to 100%

"We will: Provide support to farmers, via National Park Authorities and Areas of Outstanding Natural Beauty bodies, to help grow businesses, create green jobs, enhance biodiversity and invest in infrastructure to attract more diverse visitors to support local economies.." ATP

Fundable outcomes

FiPL delivers outcomes by appealing to individual needs, interests and circumstances. It's a bottom-up approach, and very flexible.

For example, farmers and land managers may want to:

- Develop better data, knowledge and skills
- Purchase new equipment and upgrade infrastructure
- Carry out land use change and management activities
- Host visits and events

Climate

- More carbon being stored, sequestered or both
- Reduced flood risk
- A better understanding among farmers, land managers and the public as to what different habitats and land uses can deliver for carbon storage and reduced carbon emissions
- A landscape that's more resilient to climate change

Nature

- A greater area of wildlife-rich habitat
- Greater connectivity between habitats
- Better management of existing habitats for biodiversity
- Increased biodiversity

People

- more opportunities for people to explore, enjoy and understand the landscape
- more opportunities for diverse audiences to explore, enjoy and understand the landscape
- greater public engagement in land management, for example through volunteering

Place

- Enhancing or reinforcing the quality and character of the landscape
- Historic structures and features being conserved, enhanced or interpreted more effectively
- An increase in the resilience of nature-friendly sustainable farm businesses, which contributes to a more thriving local economy



How does it work?

We follow a National Framework and report to Defra, but most aspects of the programme are administered locally.

Proposal

We confirm eligibility before releasing the application forms

Application

We carry out a site visit and help people develop strong applications

Assessment

We convene our Local Assessment Panel every 6–8 weeks

Delivery

Grant recipients deliver their projects to agreed costs and timeframes

Claim

We make payments once we have assessed projects as complete



The LAP

- Made up of 10 local farmers and other key stakeholders
- Must include Natural England rep
- Breadth of knowledge and experience
- Meets every 6-8 weeks
- Voluntary role (in professional capacity)
- Assesses applications and makes funding decisions
 - Scoring:
 - Outcomes (40%)
 - Value for money (20%)
 - Deliverability (20%)
 - Legacy and sustainability (20%)

Challenges:



- Pace of delivery
- Need to develop processes
- Budget profile and FY spend
- Monitoring and reporting
- Capacity to support applicants
- Alignment with Ag Transition and CS



Engagement

- Growing database of almost 500 contacts
- Website, events and webinars
- Word-of-mouth
- Partners networks, e.g. FWAG, NFU, etc
- National PR and press

We want to support a diverse and representative range of applicants and outcomes.

It's an amazing opportunity to expand our reach and develop relationships throughout the CNL.

Feedback to date has been very positive.



A group of approximately 20 people, mostly men, are gathered in a grassy field next to a pond. They are dressed in outdoor, practical clothing like jackets and hats, suggesting a rural or agricultural setting. Some are looking at a document held by one of the individuals. The background shows a calm pond reflecting the sky, with a line of trees and a fence in the distance.

"We are a group of local farmers and landowners, led by our facilitator Tim Field, interested in landscape-scale regeneration of the farmed environment and local food networks in the North East Cotswolds through collaboration and knowledge exchange"

Case study 1:

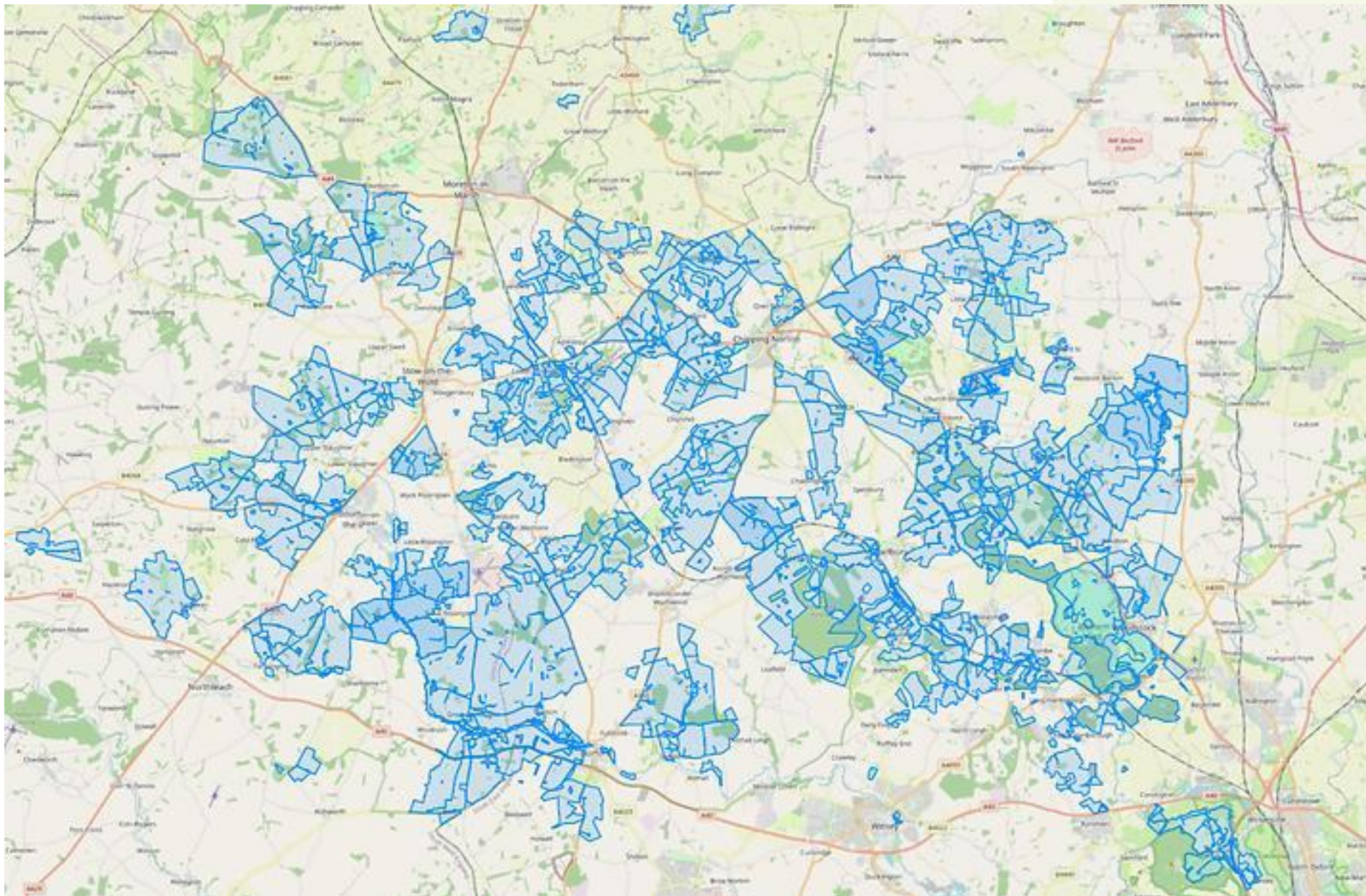
Delivering at scale

**The North East Cotswold Farmer
Cluster CIC**

- Rapid growth since founded in 2021
- Currently represents 125 farms and over 35,000 ha
- Dozens of regular events
- Five successful FiPL applications
- Developing green finance initiatives
- Successful LR bid potentially worth £100m+



THE NORTH EAST COTSWOLD
FARMER CLUSTER CIC



Cluster facilitation: £22,000

- 8 months support to cover group facilitation, inc. writing successful LR bid.

Lyneham habitat works: £16,109

- Coordinated habitat creation and enhancement across five neighbouring farms.

Winter bird feeding: £91,548

- Three-year programme of supplementary winter feeding and research across 29 farms.

Soil carbon baselining: £48,176

- Soil carbon surveying and analysis with Rothamsted RI across 36 farms (c.15,000 ha).

Floodplain meadows: £57,765

- Development of multi-site floodplain meadow restoration plans for Windrush catchment.



Case study 2:

Delivering local priorities

Projects that highlight FiPL's range

- FiPL's flexibility is one of its great strengths
- It's aimed mainly at farmers, but anyone that owns or manages land may be eligible to apply
- People collaborating with farmers and land managers can also apply

Diverse applicants, diverse projects



Improving access



Eastleach Downs Organic Farm

£41,981.45

Accessible paths, welfare hub and car park, enabling people with reduced mobility to visit the farm.

Traditional orchards



Gloucestershire Orchard Trust

£46,228

100+ practical training events in traditional orchard management and restoration.

Local food supply



Lower Hampen Farm

£35,482

New community supported agriculture scheme, supplying seasonal fruit, veg and flowers.

Grassland restoration



Box Parish Council

£14,850

Improving the condition of wildlife habitat and restoring grassland on Lower Common in Box.

Regenerative agriculture



Greystones Farm, Blockley

£7,398

Agroforestry scheme (100 fruit and nut trees), plus public access and farm shop improvements.

Heritage conservation



Hawkwood Centre, Stroud

£58,553

Restore and conserve historic Hay Barn for use hosting community rural crafts education.



Impact: Place

- 36+ projects that will conserve and enhance natural beauty
- 44 projects increasing the resilience of nature friendly sustainable farm businesses
- 562 m dry stone wall restored
- 3 historic structures conserved and enhanced
- 100+ training sessions in traditional orchard management





Impact: People

- 3300 m new permissive paths
- 8 projects hosting 55 educational farm visits
- 13 projects making the landscape more inclusive and accessible to visitors
- 26 projects supporting public engagement in land management
- 5000+ hours of volunteer time contributing to citizen science projects
- 27 pedestrian gates (upgrading for better accessibility)





Impact:
Nature



- 9,221 m hedge planted and improved
- 828 ha better management on SSSIs
- 1561 ha improved for biodiversity
- 574 ha habitat connectivity improved
- 300+ wildlife boxes installed
- 39 farms involved in supplementary winter bird feeding and research
- 7 ha woodland into coppice management, using 17 trainees
- 45 ha supporting native breeds at risk
- 25,000 ha aerial drone surveys to inform deer management
- 3 projects developing landscape-scale habitat enhancement schemes



Impact:
Climate

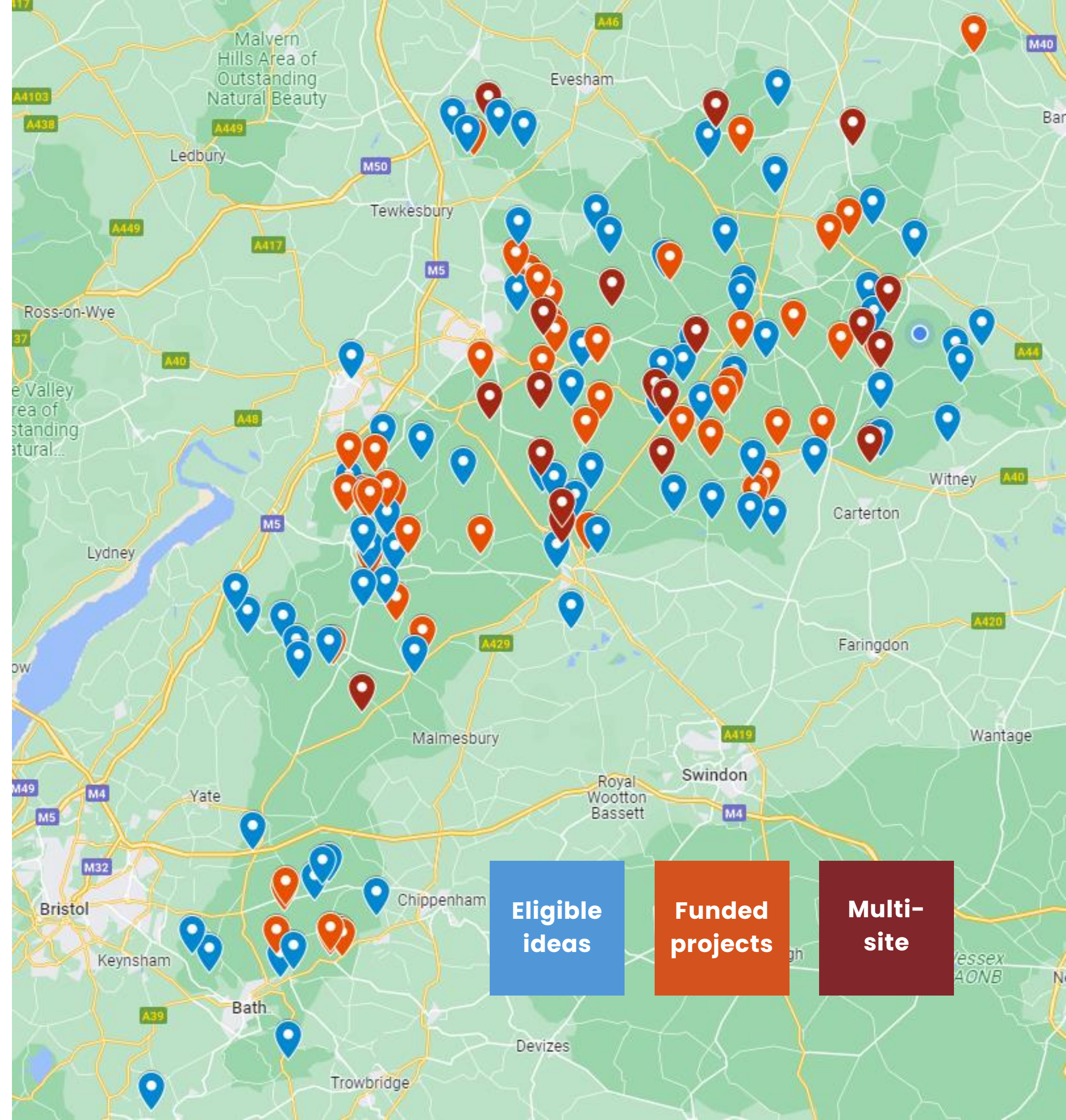


- 15,766 ha soil carbon analysis
- 2238 ha land managed with regen ag
- 61 farm natural capital assessments
- 30 projects to improve soil quality
- 9 projects to improve flood risk
- 2 ha of woodland created
- 1164 fruit and specimen trees planted outside woodland
- 9 shelterbelts planted
- 50 people trained in agroforestry
- 4.9 ha agroforestry planted
- 1 multi-use events space for demonstration regen ag farm



Progress

- **£1.9m awarded (of original £2.2m budget)**
 - Y1: £582
 - Y2: £854
 - Y3: £475
- **Total value of projects: £3.2m+**
- **88 applications submitted**
- **76 projects approved**
- **32 projects completed**
- **£850k payments made**
- **c. 500 farms and sites impacted**
- **1000+ people directly engaged**
- **170+ eligible ideas proposed**
- **30+ applications in development**



Next steps:



- Keep going – make most of extra year
- Review engagement and impact
- Continuously improve processes
- Attract new applicants
- Ensure programme legacy



Department
for Environment
Food & Rural Affairs



Farming in Protected Landscapes programme