

Figure 1
The Cotswolds Area of Outstanding Natural Beauty Landscape Character Assessment Study Area



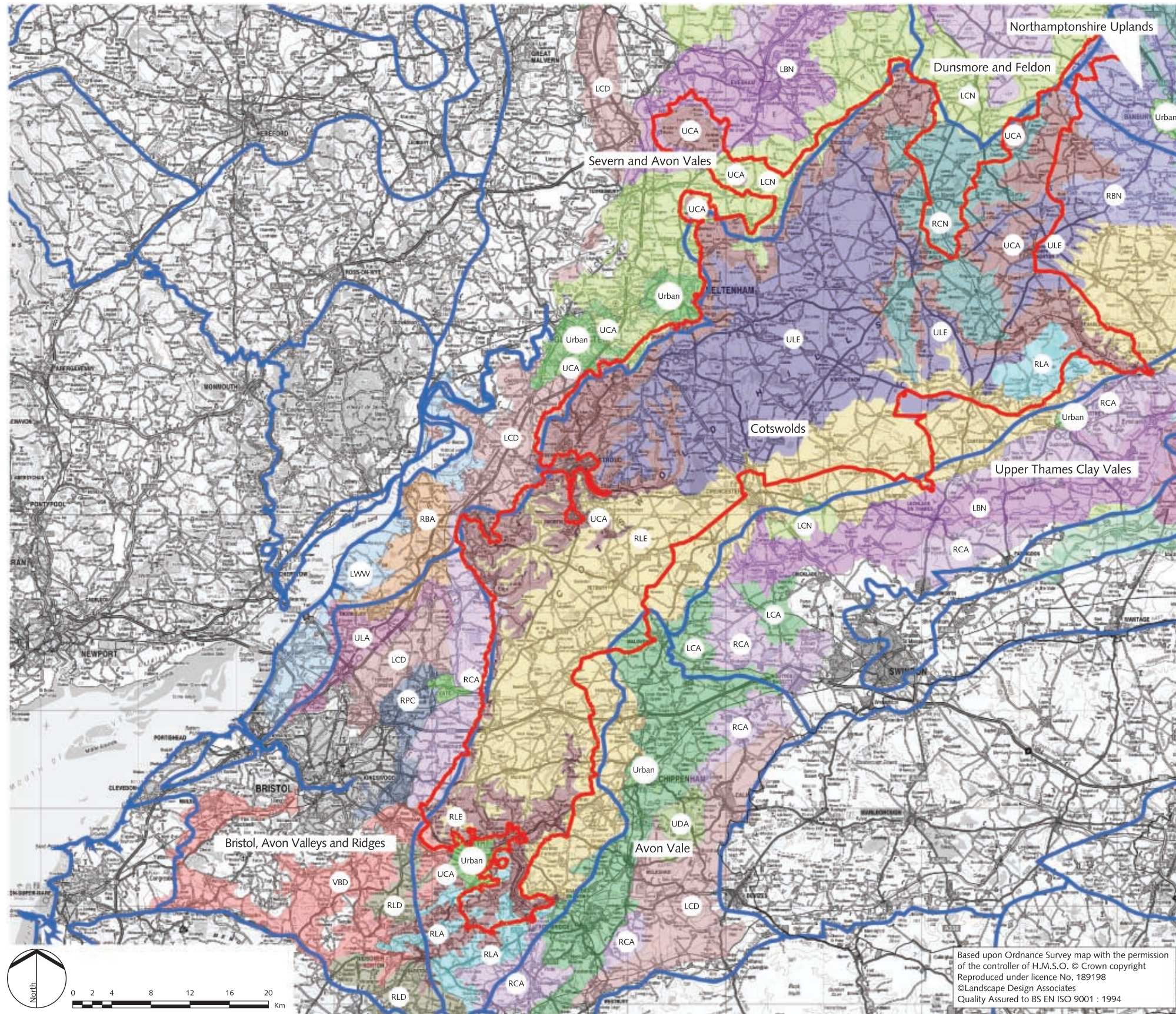


Figure 2
The Cotswolds Area of Outstanding Natural Beauty Landscape Character Assessment
Character of England and National Landscape Typology



Countryside Character Areas and National Landscape Types reproduced by kind permission of the Countryside Agency. Countryside Character Areas © Countryside Agency. National Landscape Types (LNT) (1:250,000 scale) developed for the Countryside Agency by Steven Warnock (in conjunction with the Living Landscape Project and Entec Ltd). © Countryside Agency and Cranfield University (Soil Component) 2001.

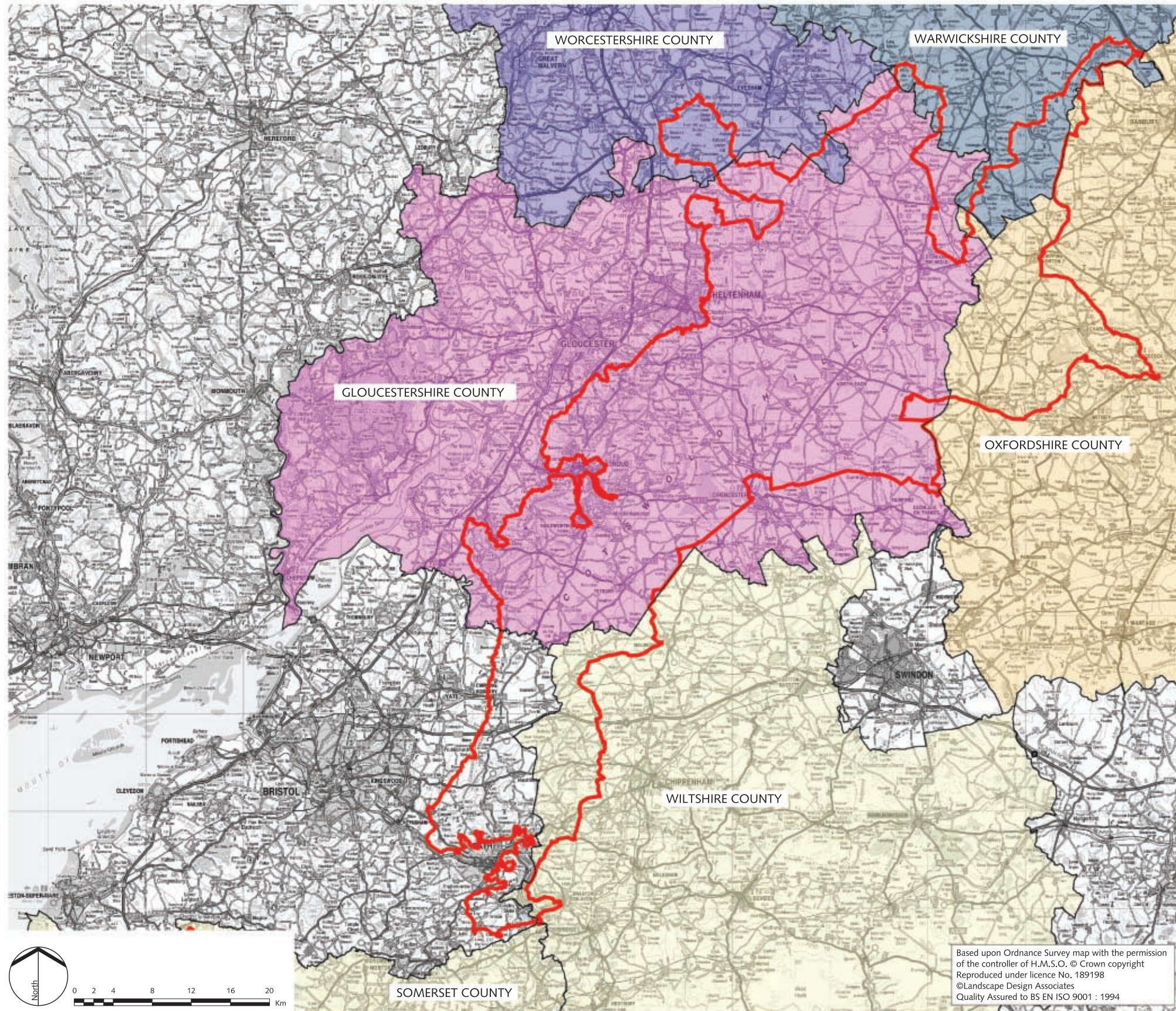





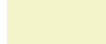


Figure 3

The Cotswolds Area of Outstanding Natural Beauty Landscape Character Assessment
Distribution of Previous Landscape Character Assessments - County Level

-  Cotswolds AONB
-  Gloucestershire Landscape Strategy (1991)
-  Warwickshire Landscape Guidelines (1993)
-  Shaping the New Worcestershire (1999)
-  Oxfordshire Landscape Character Assessment (2003)
-  Counties without Landscape Character Assessment

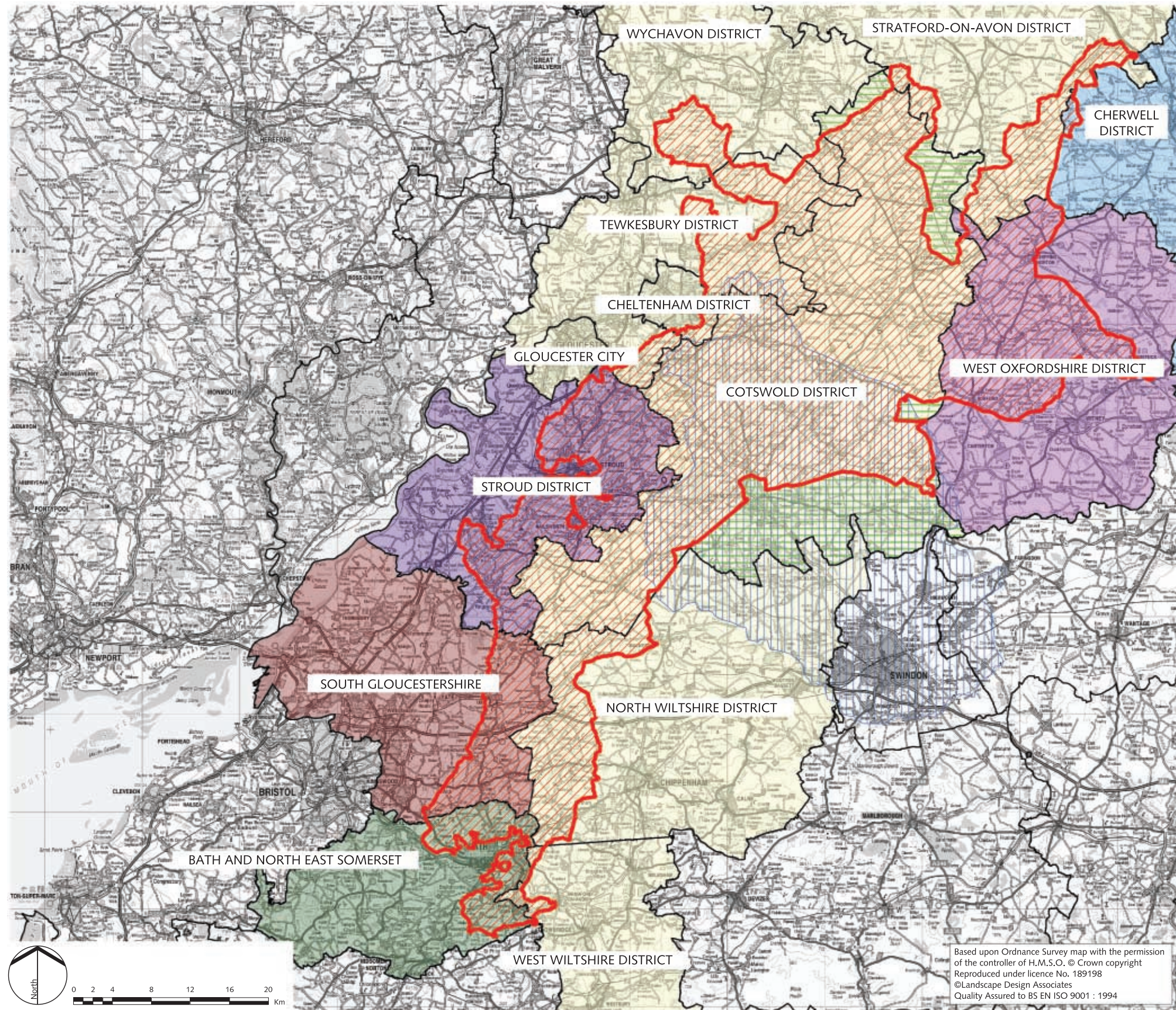


Figure 4

The Cotswolds Area of Outstanding Natural Beauty Landscape Character Assessment
Distribution of Previous Landscape Character Assessments - District, Borough and Unitary Authority Level











-  Cotswolds AONB
-  The Cotswold Landscape CCP294 (1990) and Cotswolds AONB Landscape Assessment and Environmental Guidelines (1994)
-  Upper Thames Catchment Area Landscape Assessment (1997)
-  Assessment of Landscape outside the Cotswolds AONB Cotswold District (2000)
-  Rural Landscapes of Bath and North East Somerset - A Landscape Character Assessment (2003)
-  Cherwell District Landscape Assessment (1995)
-  South Gloucestershire Landscape Character Assessment (2002)
-  Stroud District Landscape Assessment (1999)
-  West Oxfordshire Landscape Assessment (1998)
-  Districts without Landscape Character Assessment

Figure 5
 The Cotswolds Area of Outstanding Natural Beauty
 Landscape Character Assessment
 Landform

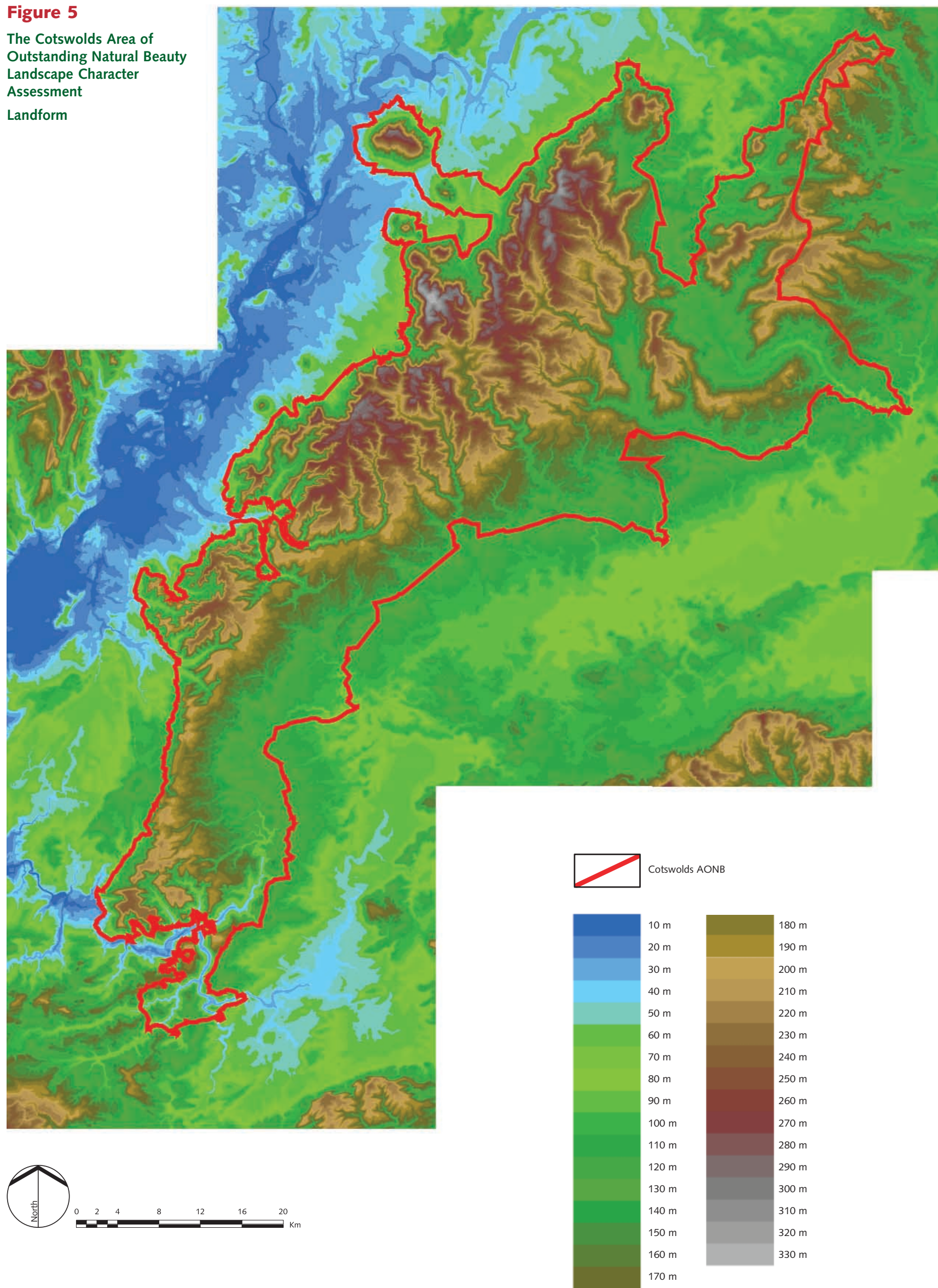
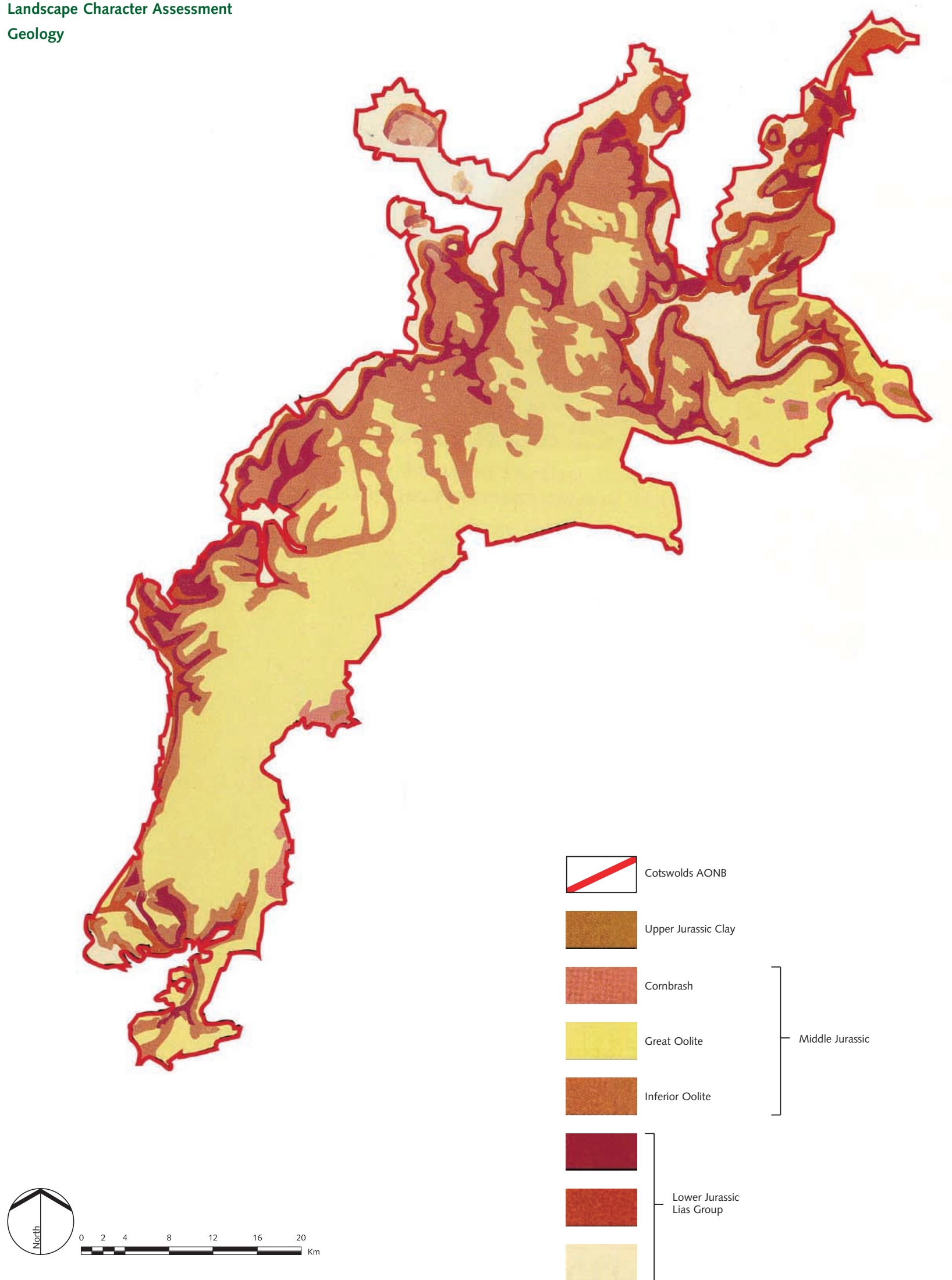


Figure 6
The Cotswolds Area of Outstanding Natural Beauty
Landscape Character Assessment
Geology



Reproduced by kind permission of the Countryside Agency
reprinted from document CCP294, The Cotswold Landscape,
Countryside Commission, 1990

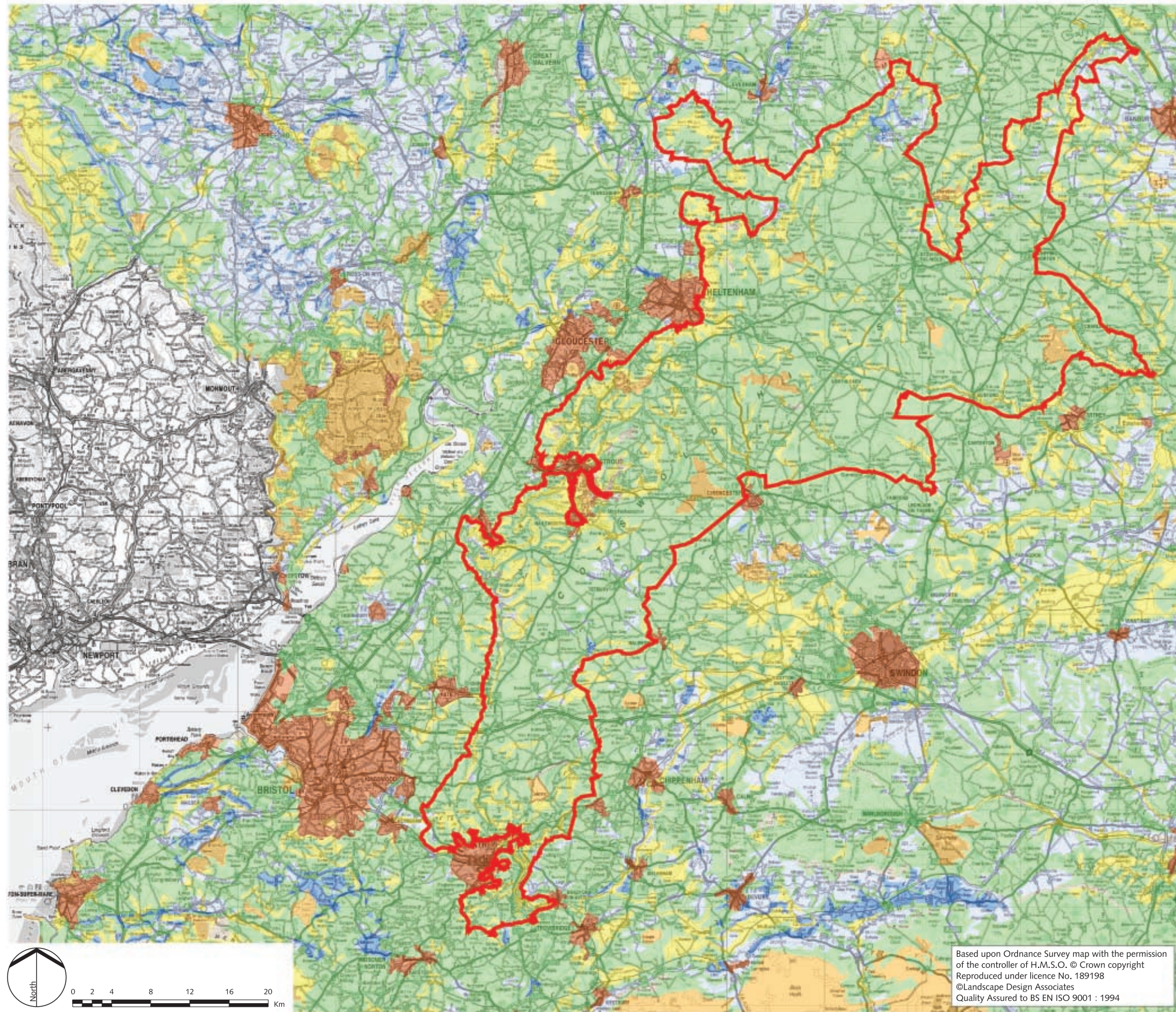
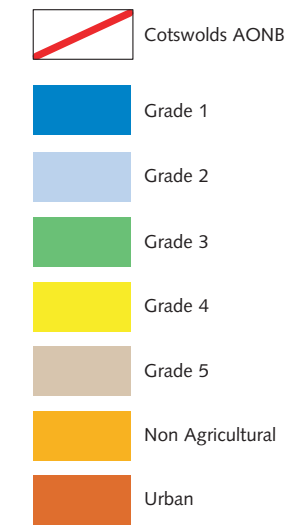


Figure 7

**The Cotswolds Area of Outstanding Natural Beauty Landscape Character Assessment
Provisional Agricultural Land Classification**



Provisional Agricultural Land Classification reproduced by kind permission of DEFRA © DEFRA

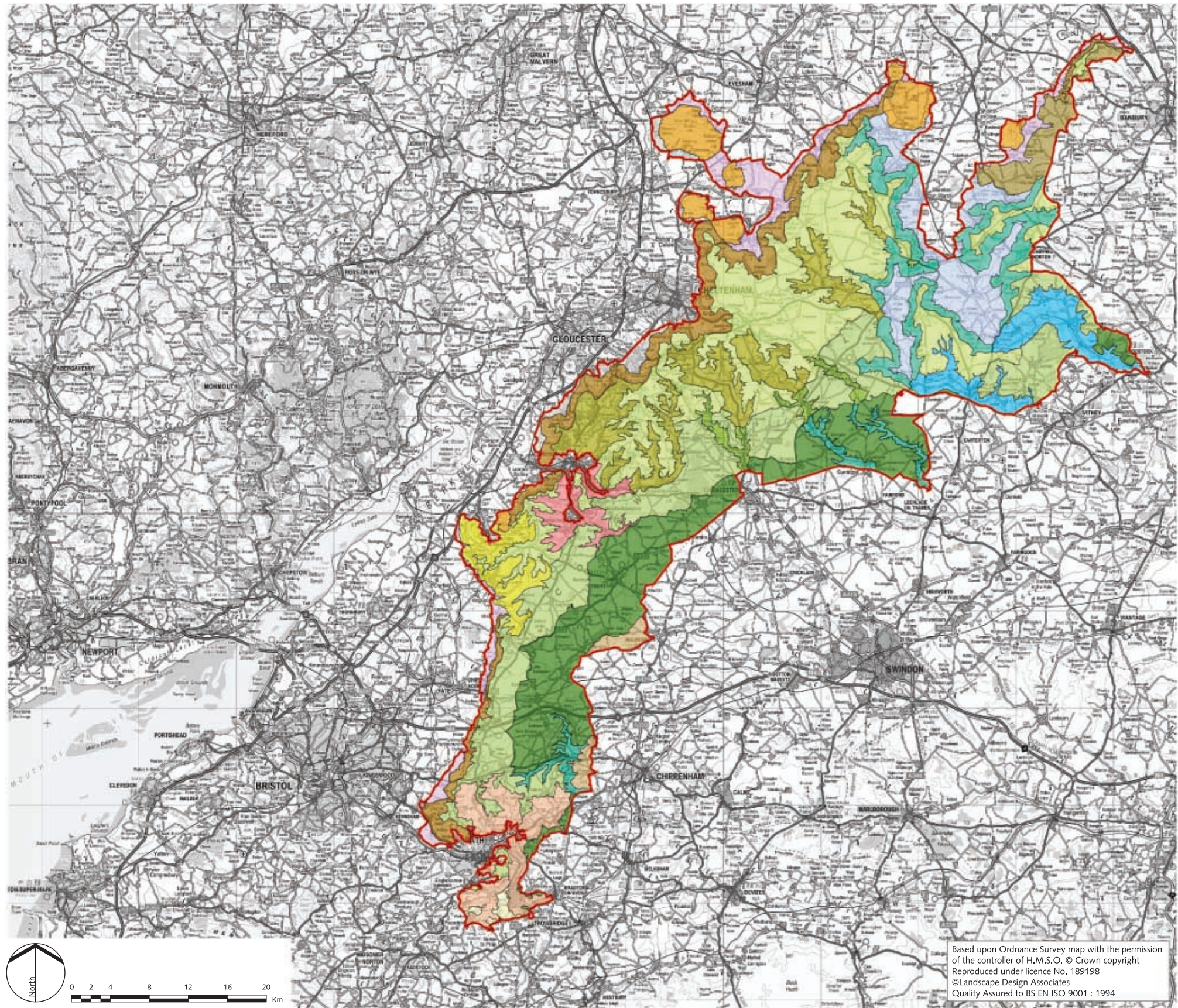














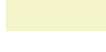



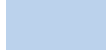
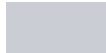


Figure 8
The Cotswolds Area of Outstanding Natural Beauty Landscape Character Assessment
Landscape Character Types

-  Cotswolds AONB
-  1. Escarpment Outlier
-  2. Escarpment
-  3. Rolling Hills and Valleys
-  4. Enclosed Limestone Valley
-  5. Settled Valley
-  6. Ironstone Hills and Valleys
-  7. High Wold
-  8. High Wold Valley
-  9. High Wold Dip-Slope
-  10. High Wold Dip-Slope Valley
-  11. Dip-Slope Lowland
-  12. Dip-Slope Lowland Valley
-  13. Low Limestone Plateau
-  14. Cornbrash Lowlands
-  15. Farmed Slopes
-  16. Broad Floodplain Valley
-  17. Pastoral Lowland Vale
-  18. Settled Unwooded Vale
-  19. Unwooded Vale